



219 N. 13th Street | Leesburg, FL 34748 | 352.787.7762

## 2025-2026 School Profile

### SCHOOL & COMMUNITY CONTEXT

First Academy-Leesburg is a K-12 private Christian school with approximately 530 enrolled students. As a ministry of First Baptist- Leesburg, our mission is to partner with families in providing a Christ-centered educational experience that equips students spiritually for service, morally for citizenship, and academically for success in higher education. First Academy-Leesburg offers a range of academic programming including college-prep coursework, as well as Advanced Placement and Dual Enrollment courses. Students are admitted to the high school after completion of an essay, an interview with administration, and an evaluation of past coursework and test scores.

First Academy-Leesburg is located in the heart of Leesburg—a growing city in Lake County, Florida, with a population of approximately 27,000. Our school benefits from a close-knit, family-oriented community that values both faith and learning. With an 18% growth rate in 2024, Leesburg ranked as the 3rd fastest growing city in the country. While about 87% of Leesburg residents have completed high school, approximately 19% hold a bachelor's degree or higher, reflecting both the need and the opportunity for educational advancement in our area. First Academy-Leesburg is working to meet that need; many of our graduates pursue college as first-generation college students.

### ACADEMIC PROGRAMMING

The most academically rigorous classes available by grade:

**9th Grade:** English I H, Geometry H, Biology I H, Spanish I, Old or New Testament, an honors Social Science

**10th Grade:** English II H, Algebra II H, Chemistry H, Spanish II, \*AP Psychology, Old or New Testament Bible

**11th Grade:** AP English Lang, AP PreCalculus, \*AP Biology, Spanish III H, Christian Apologetics, AP US History

**12th Grade:** AP English Lit, Calculus H, Physics H, AP or Dual Enrollment Spanish, World Religions, an honors Social Science

*\*Courses offered every other school year*

Career Pathways, Regular, Honors, AP, and Dual Enrollment courses are available to students.

### CONTACT US

219 N 13th St., Leesburg, FL  
(352)787-7762  
faleesburg.com

**Principal**  
Greg Frescoln

**Academic Advising  
Department Director**  
Meg Punt  
mpunt@faleesburg.com

**Assistant**  
Heather Davis  
hdavis@faleesburg.com

### SCHEDULING A VISIT

College admissions counselors are welcome to visit from August 7th – November 15th on Tues. and Thurs. during Eagle Time. Call the office to set up an appointment.

### STUDENT DEMOGRAPHICS 161 HS STUDENTS

Senior Class: 35

Student Body Ethnicity:

White: 73%

Hispanic: 11%

Black: 9%

Asian: 8%

### ACCREDITATIONS & AFFILIATIONS



### SAT SCORES

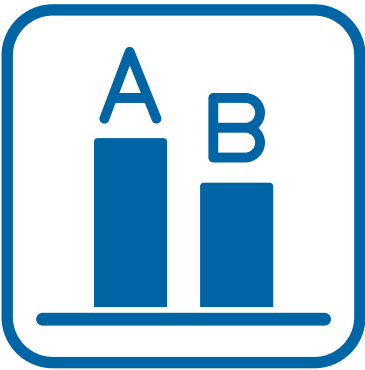
FA average scores for all students testing

Year	Middle 50%	Top 10%
2024-25	1095	1362
2023-24	1114	1365

### GRADUATION REQUIREMENTS

Subject	College Prep	CP w/Distinction
Math	4	4
English	4	4
Foreign Language	2	2
Social Studies	3	3
Science	3	8
Fine Arts	1	1
Physical Education	1	1
Bible	4	4
Total Credits	24	24
Service Hours	100	100
Honors	None	10/min. 3 AP
Wt. GPA required	3.0	3.8

GRADING SCALE WEIGHTED



		Regular	Honors	AP/DE
90-100	A	4.0	4.5	5.0
80-90	B	3.0	3.5	4.0
70-80	C	2.0	2.5	3.0
60-70	D	1.0	1.5	2.0
Below 60	F	0	0	0

\*The academic year consists of two 18-week semesters. Semester grades consist of 80% course grades and 20% exam grades. All courses are included in the GPA. Students are placed on academic probation if they receive a D or an F semester grade in a graduation requirement.

EXTRACURRICULAR OFFERINGS

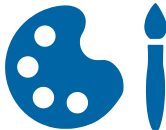
ATHLETICS

- **16 Varsity Sports**, including Varsity Beach Volleyball and Men’s Wrestling
- **3 Junior Varsity Sports**
- **Mentorship** opportunities within middle school sports teams
- Exposure to **Athletic Training** through our Care and Prevention of Athletic Injuries course



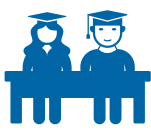
CELEBRATING THE ARTS

- **Culture Café** an annual event featuring student writing, performance, and visual art
- **Arts Assembly** an annual event featuring student’s performing arts
- **Spring Theatre Production** an event that draws its audience from the Leesburg community as well as the school population



STUDENT ORGANIZATIONS

- **Service Clubs:** Triad, Key Club, and Fellowship of Christian Athletes
- **Student Support Clubs:** Student Government, Prom Committee, and Active Minds Club (supporting student’s mental health)
- **Honors Societies**  
National Honors Society  
National Hispanic Honors Society



CLASS OF 2025



**48**  
Graduates



**8,175**  
Community Service Hours




**100%**  
Graduation Rate




**31%**  
Attending 4-year Institutions

**79**  
AP Tests Taken






Bright Futures Awards  
**15**



**100%**  
AP PreCalc Exam Pass Rate



**21**  
AP Scholars



**76%**  
AP Exam Pass Rate Overall

COLLEGE DESTINATIONS OF THE 2024-2025 GRADUATING CLASS

- University of Florida
- Florida State University
- University of Central Florida
- University of South Florida
- Southeastern University
- University of Fort Lauderdale
- Tallahassee State College
- Santa Fe State College
- Lake Sumter State College